



**Blackdown
Hills**
National
Landscape

Maps of Potential 30by30 within the Blackdown Hills National Landscape's Nature Recovery Areas to support capital funded applications 25/26



Overview

These maps are created using 'potential' 30 by 30 areas (National Landscapes Partnership, 2024). They illustrate areas, which if managed, can become 'actual' area to contribute towards the UK's 30 by 30 goals. By concentrating on the Blackdown Hills National Landscape's existing Nature Recovery Areas, capital uplift funding can be focused on 'potential' 30 by 30 within these areas.

Achieving 30by30 goals

There are two methods to create 30 by 30 habitat. Our priority is to convert the mapped 'potential' 30 by 30 habitat to 'actual' habitat, but there is still place to create/ restore habitat where it improves habitat connectivity.

1. Convert 'potential' 30 by 30 habitat to 'actual' 30by30 habitat
2. Creation/ restoration of connected habitat

In addition, maintaining condition and avoiding deterioration of priority habitat remains a key priority.

Note for context: the 30 by 30 classification [30by30 on land in England: confirmed criteria and next steps - GOV.UK](#) links to the Protected Landscapes Targets & Outcome Framework (PLTOF)) [Protected Landscapes Targets and Outcomes Framework - GOV.UK](#), notably targets 1 to 4. This is because habitats created or restored can count towards PLTOF targets, as well as 30 by 30. The Government are still defining this synergy/ overlap and how to accurately record it.



1. Convert 'potential' 30by30 habitat to actual 30by30 habitat

The current 'potential' of the Blackdown Hills National Landscape to achieve 30 by 30 is 20% of the total area (i.e. restore **all** extant priority habitat). Of this, the current 'actual' (meeting 30 by 30) is 10% of the total Blackdown Hills National Landscape area (3,700ha), with the majority in Somerset.

Therefore, to reach 30 by 30, 10% more priority habitat would need to be re-created in the Blackdown Hills National Landscape

The mapped 'potential' 30 by 30 areas include regions which already have some protections or management in place, and habitats with important biodiversity value. The criteria used to identify these areas help determine which regions and habitats have the potential to contribute towards the 30 by 30 goal without significant land use changes, given support from landowners, land managers, targeted action, and investment. The term 'potential 30 by 30 areas' refers to broad areas and does not imply that these entire areas will be able to contribute to 30 by 30 in the future.

- Red dashed outlines indicate Sites of Special Scientific Interest (SSSIs) that are predominantly in favourable or unfavourable recovering condition. These areas are considered by the government to already be classed as 'actual' area for 30by30. This means that they **are not** a priority for capital uplift 30by30 monies in the 25/26 financial year. Instead, capital uplift funding should be focused on potential 30by30 areas (see below). N.B. Other funding is still available for SSSIs including agri-environment schemes and Farming in Protected Landscapes (see [Farming in Protected Landscapes - Blackdown Hills National Landscape](#))
- All other coloured areas (split by priority habitat type) indicate 'potential' 30by30 areas that **are** eligible for capital uplift funding in 25/26. Moving towards 30by30 will primarily be by management (DEFRA criteria 3) using capital monies. This states that '30by30 areas should be effectively managed and able to demonstrate overall progress towards in-situ conservation outcomes'. Management should provide confidence that the areas have the capacity to achieve and sustain such outcomes. Establishment of baselines to assess progress should be in place.



Areas mapped as 'Potential 30by30 Areas':

<i>Protected areas</i>	Special Sites of Scientific Interest (SSSIs), Special Protection Areas (SPA), Special Area of Conservation (SAC), Ramsar sites, Local Nature Reserves, National Nature Reserves
<i>Deciduous woodland</i>	National Forest Inventory filtered to deciduous woodland categories.
<i>Ancient woodland</i>	Ancient Woodland data excluding conifers.
<i>Woodland pasture and parkland</i>	Wood pasture and Parkland data excluding conifers.
<i>Priority habitat</i>	Priority Habitat Inventory excluding deciduous woodland or peat
<i>Surface water</i>	Surface water from OS OpenMap Local

N.B. Deep peat counts as potential 30by30 but there is none mapped within BHNL.



2. Creation/ restoration of connected habitat

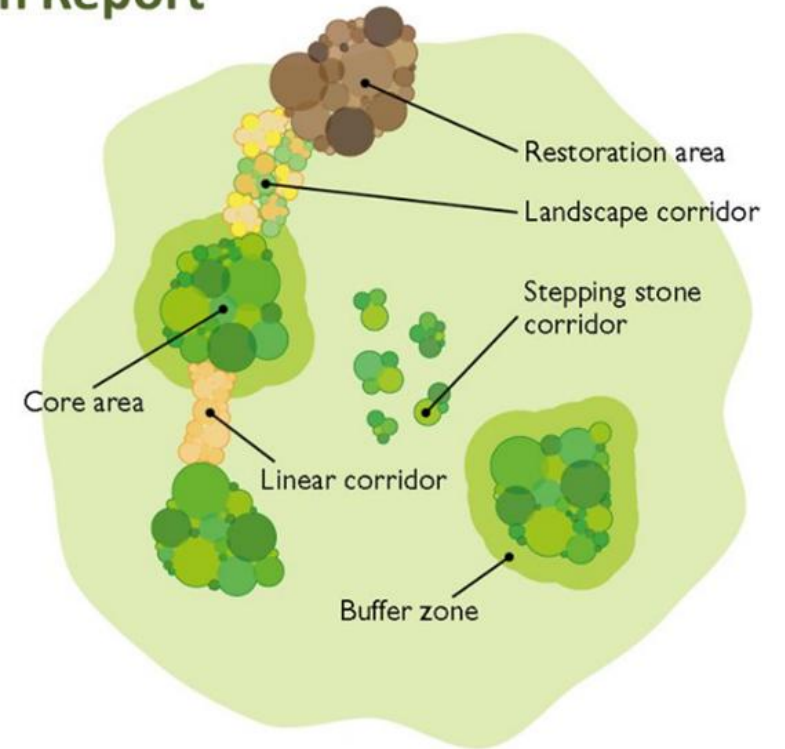
In addition to improving condition of habitat to take sites from 'potential' 30 by 30 area to 'actual' 30 by 30 area, priority habitat can be created/ restored to become 'actual' area for 30 by 30. This must be in areas where creation/ restoration improves connectivity between existing priority habitats classed as 'potential' 30 by 30 areas within the 'potential' 30 by 30 maps.

The schematic to the right, taken from the The Lawton Report (DEFRA, 2010) illustrates the importance of creating/ restoring connected ecological networks. This is valuable to allow species and genes to move between habitats.

The Lawton Report

- Bigger
- Better
- Connected

Put the
Right Habitat
in the
Right Place



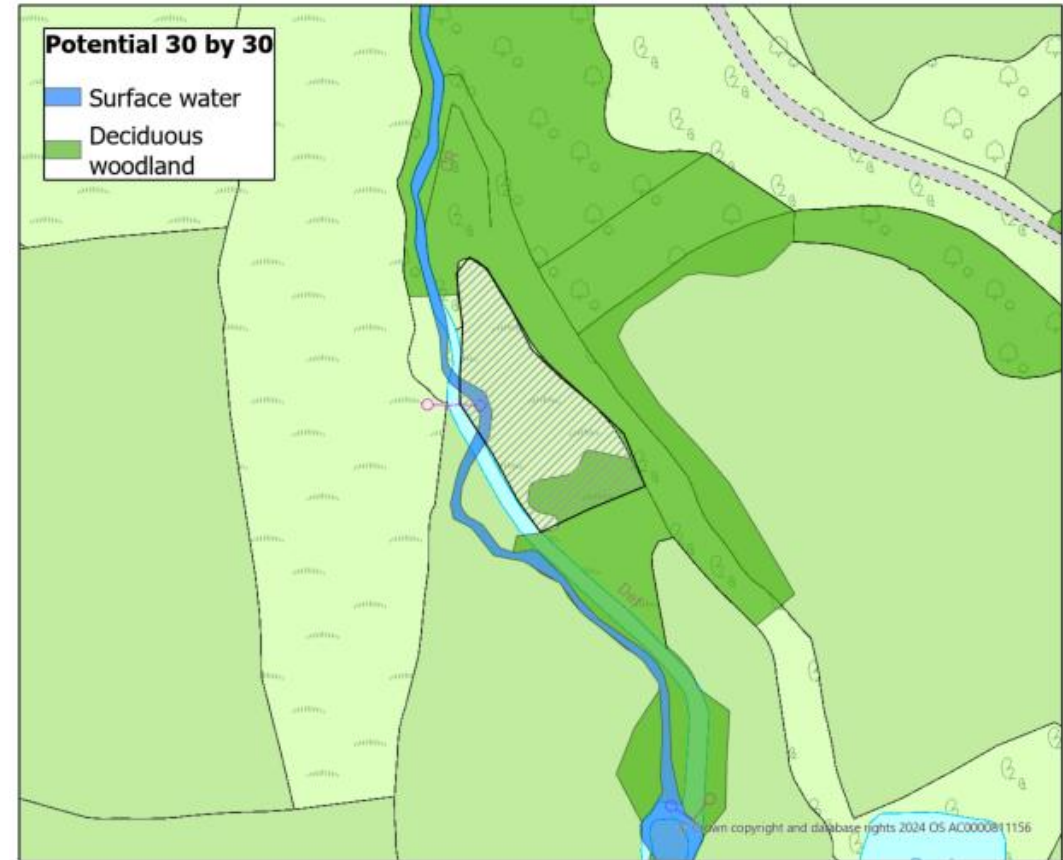
Making Space for Nature: a review of England's wildlife sites and ecological networks: defra 2010



Example: Species rich wetland creation

The example to the left illustrates a grey hashed area intended for species rich wetland creation. Whilst the area is not entirely within mapped 'potential' 30 by 30 area, it is situated between surface water and deciduous woodland which is classed as 'potential' 30 by 30. Thus, wetland creation in this area would improve the connectivity between these habitats, subsequently qualifying for 'actual' 30 by 30.

The project could have additional value for contributing to 'actual' 30 by 30 by investing in management within the deciduous woodland.





Moving towards actual 30by30 within the Blackdown Hills

The Blackdown Hills National Landscape have been assigned **£157,000** of capital uplift funding for 2025/26. This funding is for capital expenditure which can target 'potential' 30by30 areas and new connected habitats.

Capital uplift funding **can** be used in association with agri-environment schemes, so long as there is no double funding.

Examples of capital expenditure:

- Enable 'sustainable' grazing management- e.g. holding pens for cattle, livestock management (e.g. stock fencing), GPS (no fence) collars.
- Invasive scrub control using machinery- e.g. removal of invasive scrub on spring line mires and creation of butterfly flyways.
- Equipment to manage 'difficult' sites e.g. bracken basher.
- Bringing undermanaged woodlands back into management e.g. glade and ride restoration, machinery access, coppicing and thinning.
- Connecting features (such as 'new' hedges and copses) and 'stepping stones' (areas restored through capital works to provide feeding opportunities for priority species).

For further conversations please contact Hannah Metson - hannah.metson@devon.gov.uk

BLACKDOWN HILLS NATIONAL LANDSCAPE



Legend

- BHNL Boundary
- Nature Recovery Areas
- Potential 30by30 Areas
- Woodland pasture and parkland
- Surface water
- Protected areas
- Priority habitat
- Deciduous woodland
- Ancient woodland
- Excluded (SSSI's in favourable and unfavourable recovering condition - considered 'actual' 30by30)

Center: 3°8'1"W 50°52'49"N

0 1.5 3 6 Kilometers

ArcGIS
Plot:



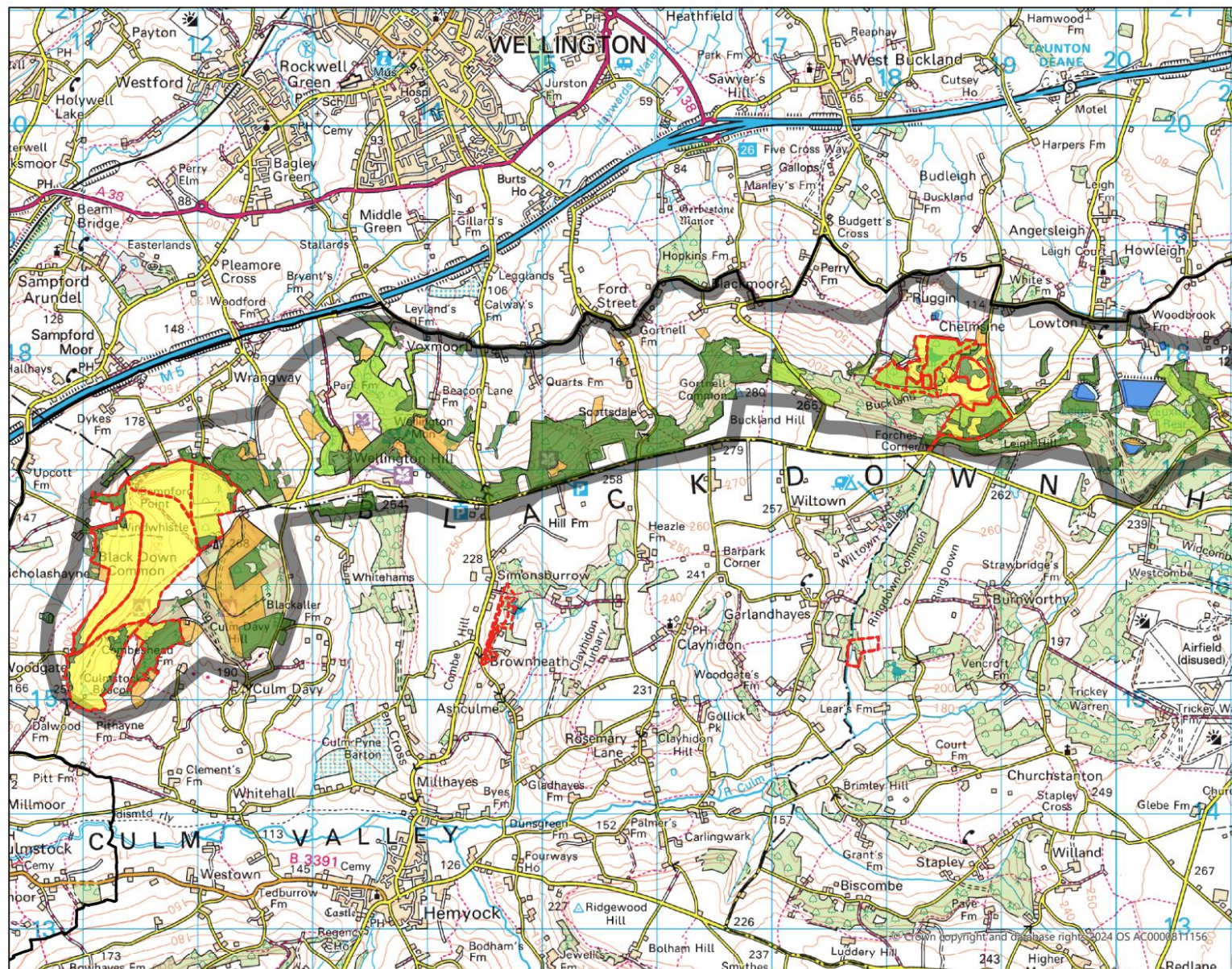
© Crown copyright and database rights 2025 OS AC0000811156

Date: 11/06/2025

Author: Amy Taverner, Farming in Protected Landscapes Trainee



N1 NORTH SCARP - WEST



- ### Legend
- N1: North Scarp
 - BHNL Boundary
 - Potential 30by30 Areas N1
 - Protected areas
 - Deciduous woodland
 - Ancient woodland
 - Woodland pasture and parkland
 - Priority habitat
 - Surface water
 - Excluded (SSSI's in favourable and unfavourable recovering condition - considered 'actual' 30by30)

Center: 3°11'59"W 50°56'39"N

0 0.5 1 2 Kilometers

ArcGIS
Plot:



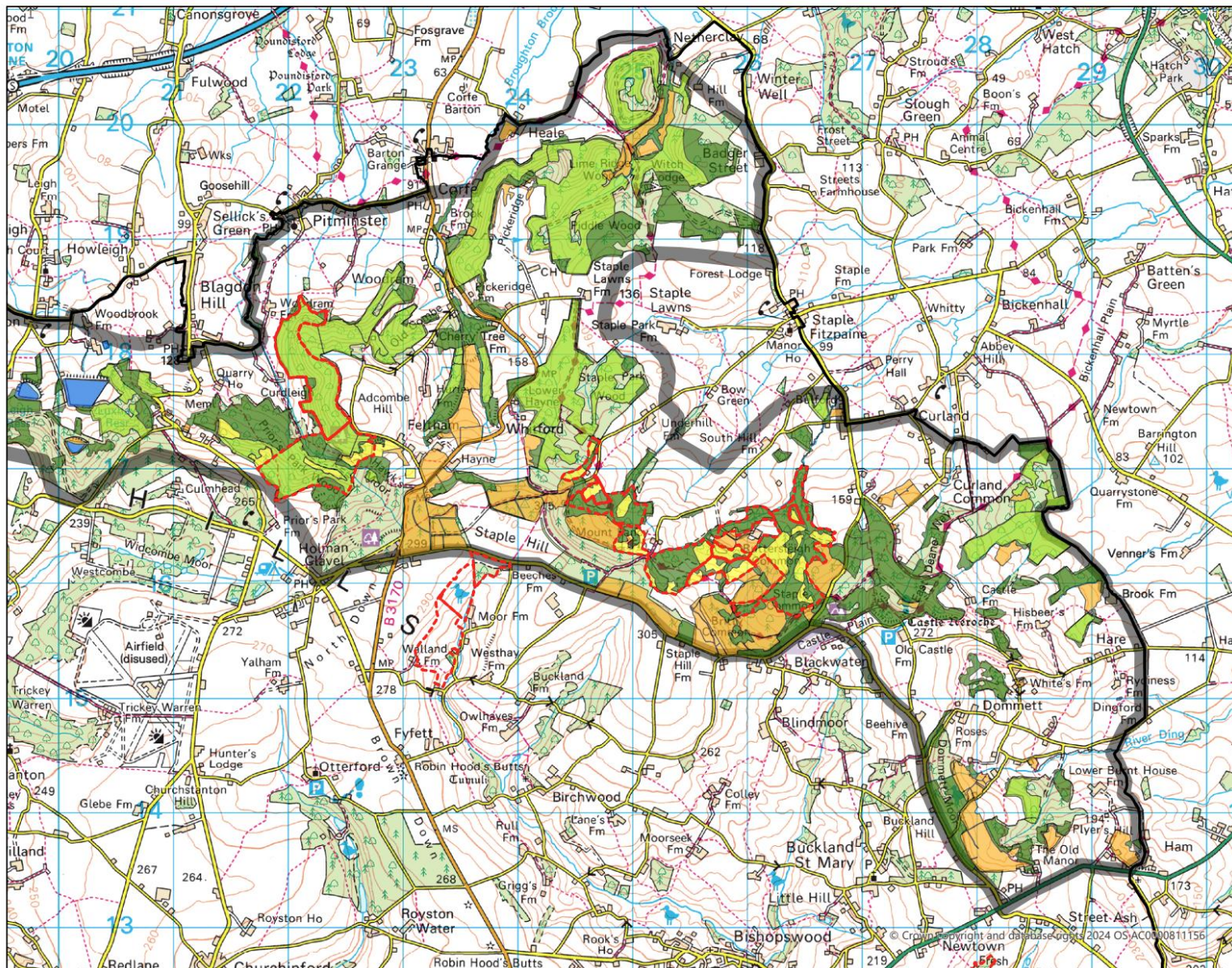
© Crown copyright and database rights 2025 OS AC0000811156

Date: 18/06/2025

Author: Amy Taverner, Farming in Protected Landscapes Trainee



N1 NORTH SCARP - EAST



Legend

- N1: North Scarp
- BHNH Boundary
- Potential 30by30 Areas N1
- Protected areas
- Deciduous woodland
- Ancient woodland
- Woodland pasture and parkland
- Priority habitat
- Surface water

Excluded (SSSI's in favourable and unfavourable recovering condition - considered 'actual' 30by30)

Center: 3°4'8"W 50°56'44"N

ArcGIS
Plot:



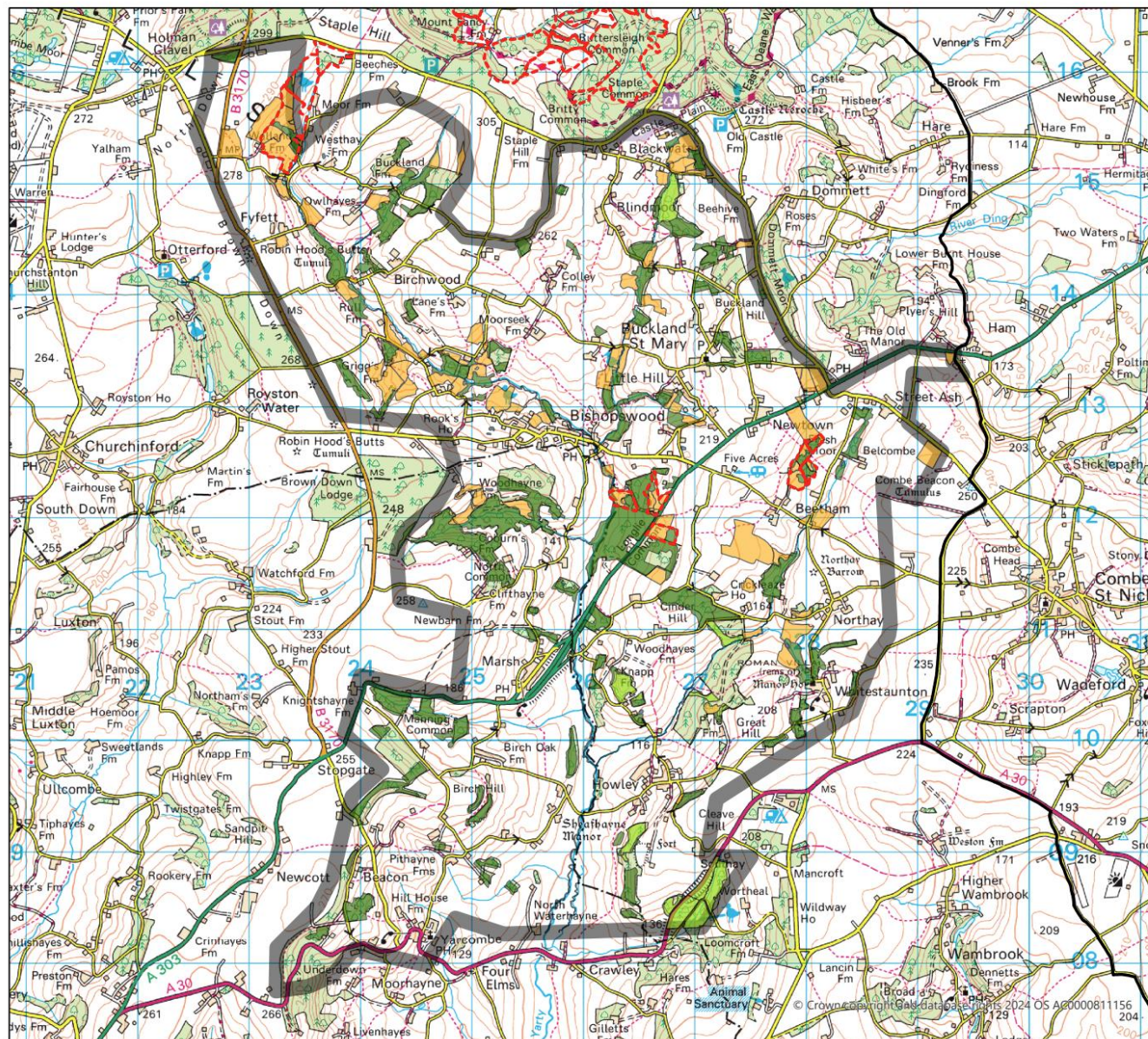
© Crown copyright and database rights 2025 OS AC0000811156

Date: 18/06/2025

Author: Amy Taverner, Farming in Protected Landscapes Trainee



A1 UPPER YARTY



- ### Legend
- A1: Upper Yarty
 - BHNH Boundary
 - Potential 30x30 Areas A1
 - Protected areas
 - Deciduous woodland
 - Ancient woodland
 - Woodland pasture and parkland
 - Priority habitat
 - Surface water
 - Excluded (SSSI's in favourable and unfavourable recovering condition - considered 'actual' 30x30)

Center: 3°3'7"W 50°54'6"N

0 0.5 1 2 Kilometers

ArcGIS
Plot:



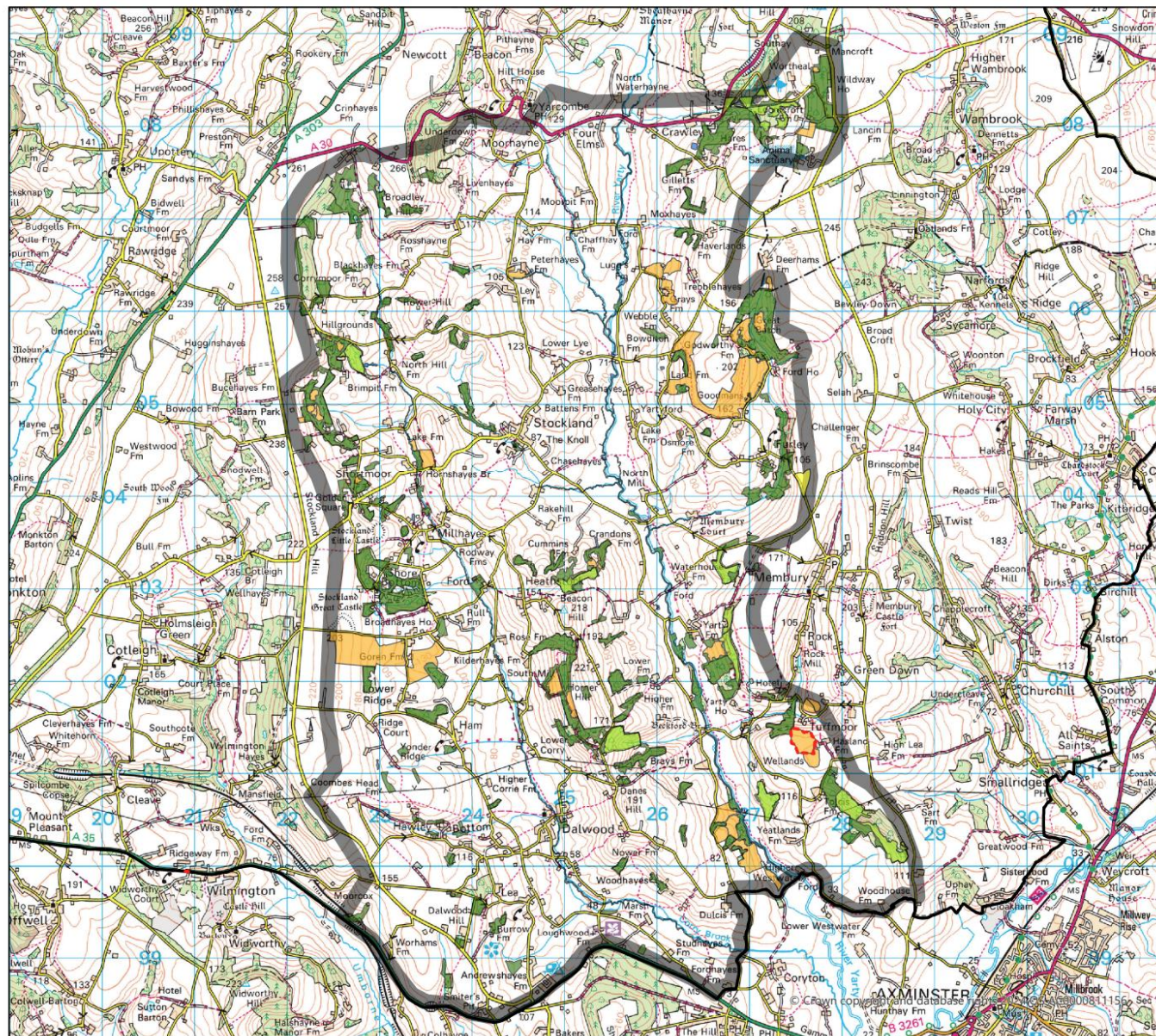
© Crown copyright and database rights 2025 OS AC0000811156

Date: 18/06/2025

Author: Amy Taverner, Farming in Protected Landscapes Trainee



A2 LOWER YARTY



Legend

- A2: Lower Yarty
- BHNH Boundary
- Potential 30by30 Areas A2
- Protected areas
- Deciduous woodland
- Ancient woodland
- Woodland pasture and parkland
- Priority habitat
- Surface water
- Excluded (SSSI's in favourable and unfavourable recovering condition - considered 'actual' 30by30)

Center: 3°3'43"W 50°49'39"N

ArcGIS
Plot:



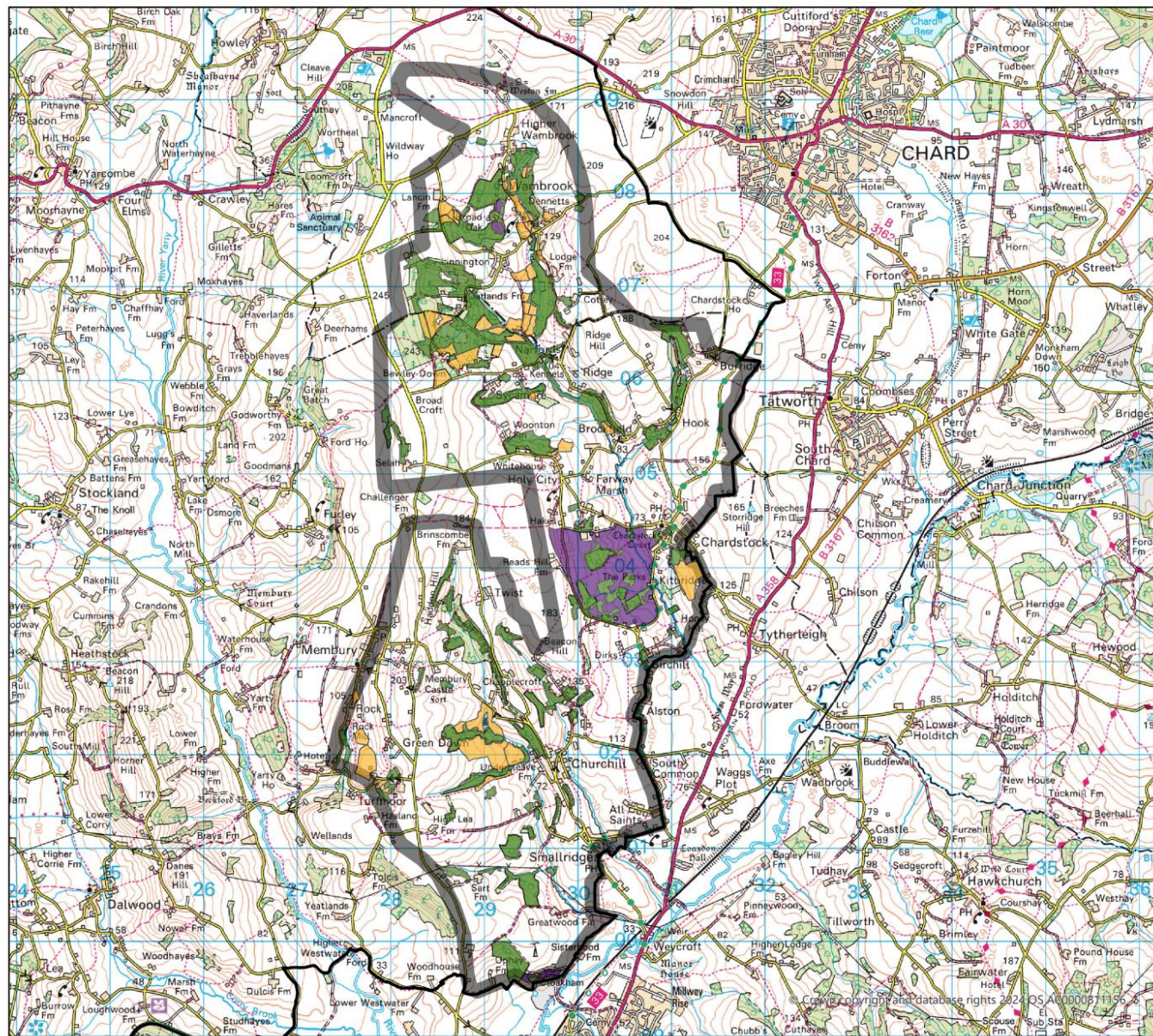
© Crown copyright and database rights 2025 OS AC0000811156

Date: 18/06/2025

Author: Amy Taverner, Farming in Protected Landscapes Trainee



A3 WAMBROOK AND MEMBURY



Legend

- A3: Wambrook and Membury
- BHN Boundary
- Potential 30by30 Areas A3
 - Protected areas
 - Deciduous woodland
 - Ancient woodland
 - Woodland pasture and parkland
 - Priority habitat
 - Surface water

Center: 2°59'36"W 50°50'6"N

0 0.75 1.5 3 Kilometers

ArcGIS
Plot:



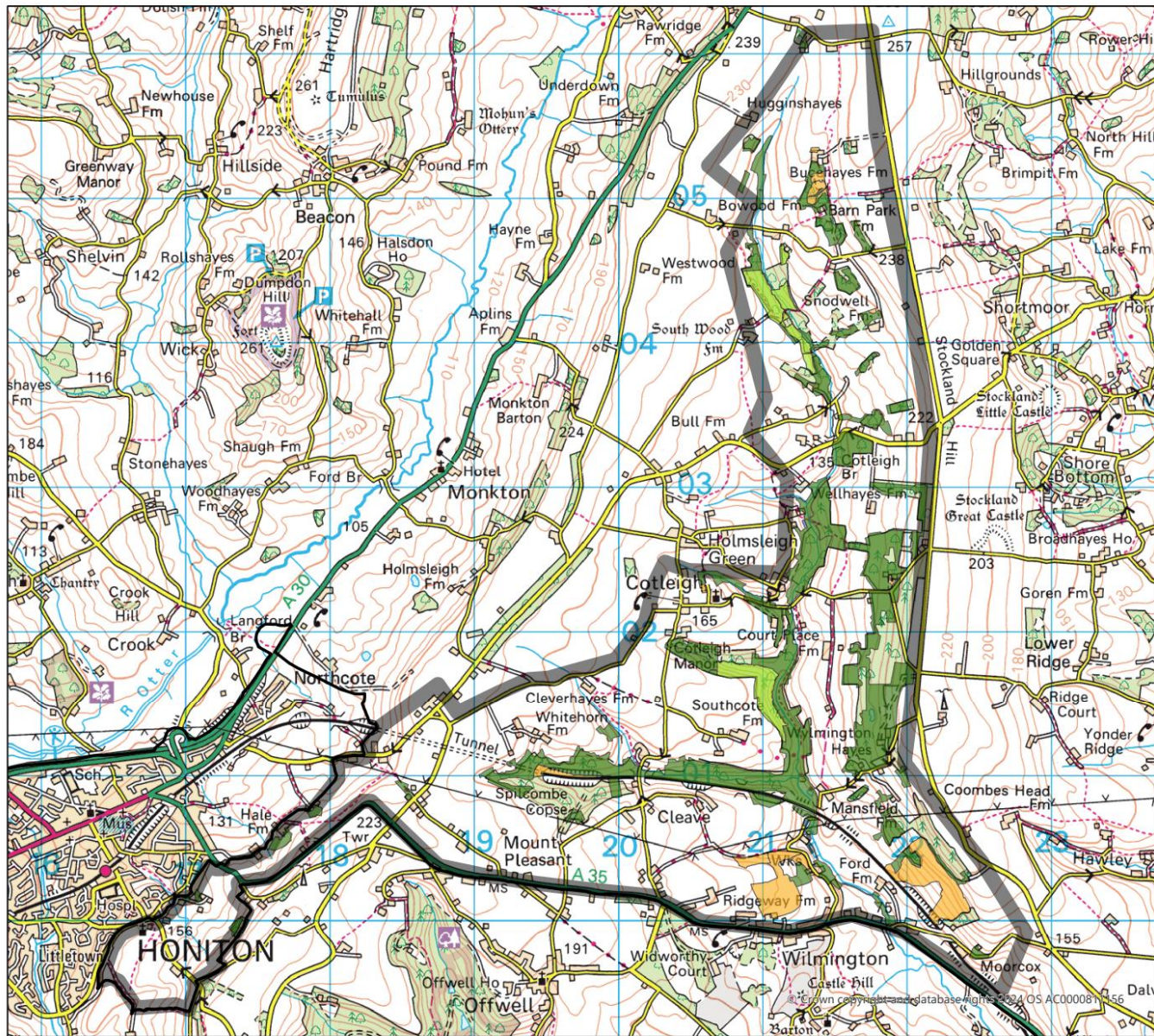
© Crown copyright and database rights 2025 OS AC0000811156

Date: 28/05/2025

Author: Amy Taverner, Farming in Protected Landscapes Trainee



A4 UMBORNE



- Legend**
- A4: Umborne
 - BHNL Boundary
 - Potential 30x30 Areas A4
 - Protected areas
 - Deciduous woodland
 - Ancient woodland
 - Woodland pasture and parkland
 - Priority habitat
 - Surface water

Center: 3°8'22"W 50°49'6"N

0 0.5 1 2 Kilometers

ArcGIS
Plot:



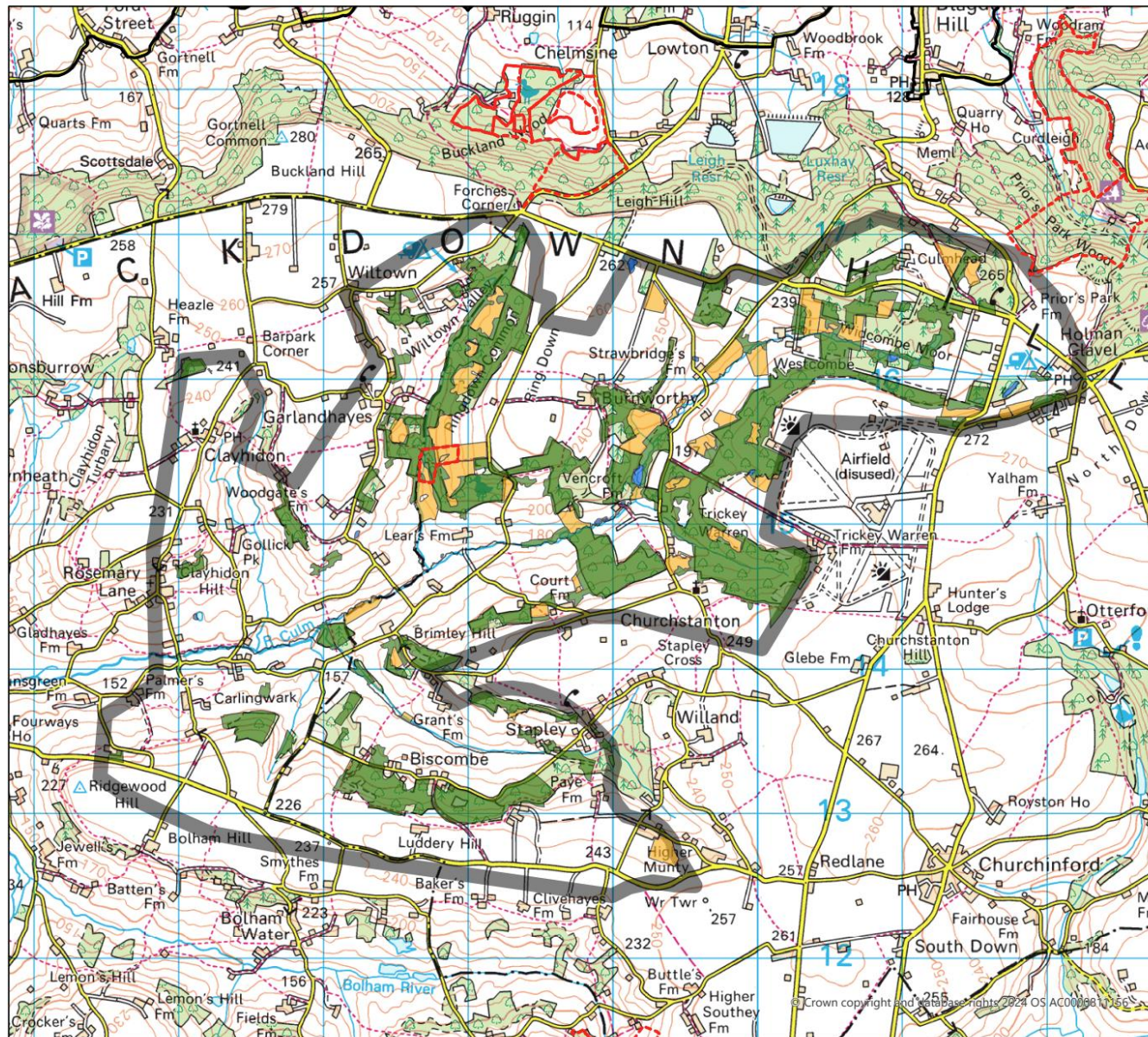
© Crown copyright and database rights 2025 OS AC0000811156

Date: 28/05/2025

Author: Amy Taverner, Farming in Protected Landscapes Trainee



C1 UPPER CULM



- ### Legend
- C1: Upper Culm
 - BHNL Boundary
 - Potential 30by30 Areas C1
 - Protected areas
 - Deciduous woodland
 - Ancient woodland
 - Woodland pasture and parkland
 - Priority habitat
 - Surface water
 - Excluded (SSSI's in favourable and unfavourable recovering condition - considered 'actual' 30by30)
 -

Center: 3°9'19"W 50°55'42"N

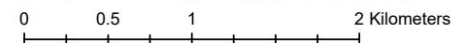
ArcGIS
Plot:



© Crown copyright and database rights 2025 OS AC0000811156

Date: 18/06/2025

Author: Amy Taverner, Farming in Protected Landscapes Trainee



C2 CULMSTOCK TO HEMYOCK



- ### Legend
- C2: Culmstock to Hemyock
 - BHNH Boundary
 - Potential 30by30 Areas C2
 - Protected areas
 - Deciduous woodland
 - Ancient woodland
 - Woodland pasture and parkland
 - Priority habitat
 - Surface water
 - Excluded (SSSI's in favourable and unfavourable recovering condition - considered 'actual' 30by30)

Center: 3°14'5"W 50°55'14"N

ArcGIS
Plot:



© Crown copyright and database rights 2025 OS AC0000811156

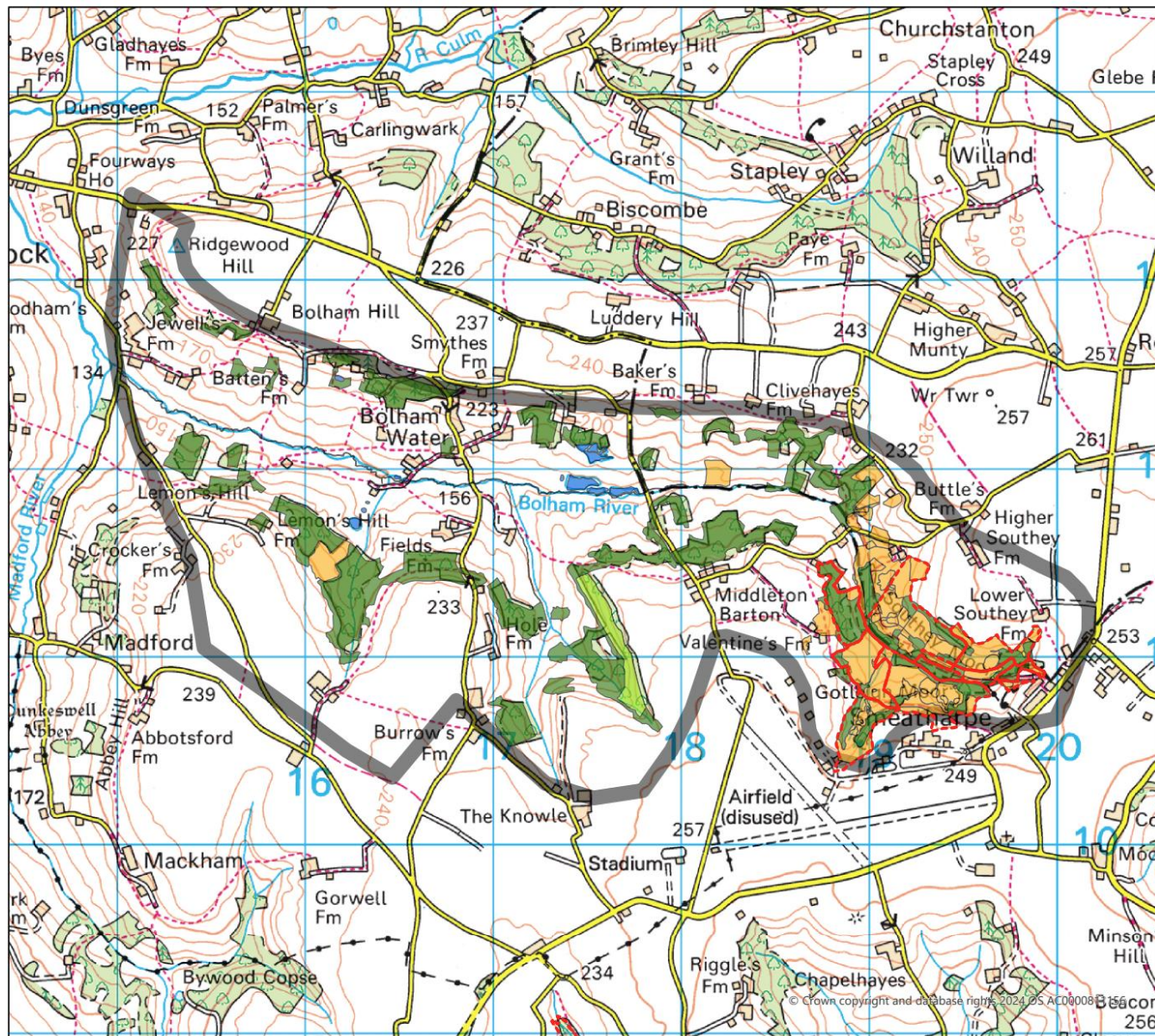
Date: 18/06/2025

Author: Amy Taverner, Farming in Protected Landscapes Trainee



0 0.5 1 2 Kilometers

C3 BOLHAM WATER



- ### Legend
- C3: Bolham Water
 - BNL Boundary
 - Potential 30by30 Areas C3
 - Protected areas
 - Deciduous woodland
 - Ancient woodland
 - Woodland pasture and parkland
 - Priority habitat
 - Surface water
 - Excluded (SSSI's in favourable and unfavourable recovering condition - considered 'actual' 30by30)

Center: 3°10'25"W 50°53'54"N

ArcGIS
Plot:



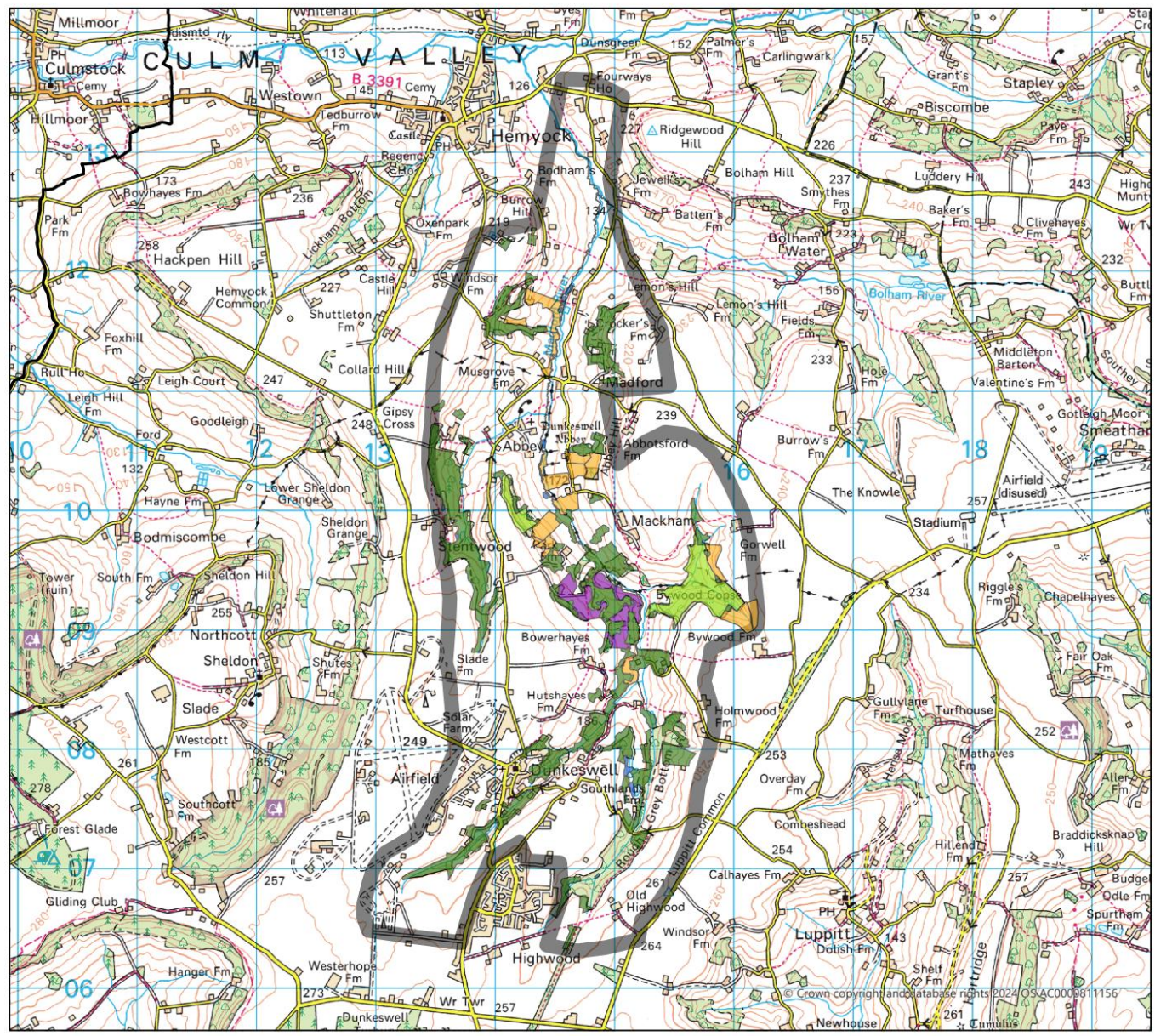
© Crown copyright and database rights 2025 OS AC0000811156

Date: 18/06/2025

Author: Amy Taverner, Farming in Protected Landscapes Trainee

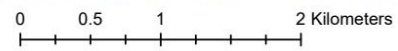


C4 MADFORD RIVER



- ### Legend
- C4: Madford River
 - BHNL Boundary
 - Potential 30by30 Areas C4
 - Protected areas
 - Deciduous woodland
 - Ancient woodland
 - Woodland pasture and parkland
 - Priority habitat
 - Surface water

Center: 3°12'45"W 50°52'55"N



ArcGIS
Plot:



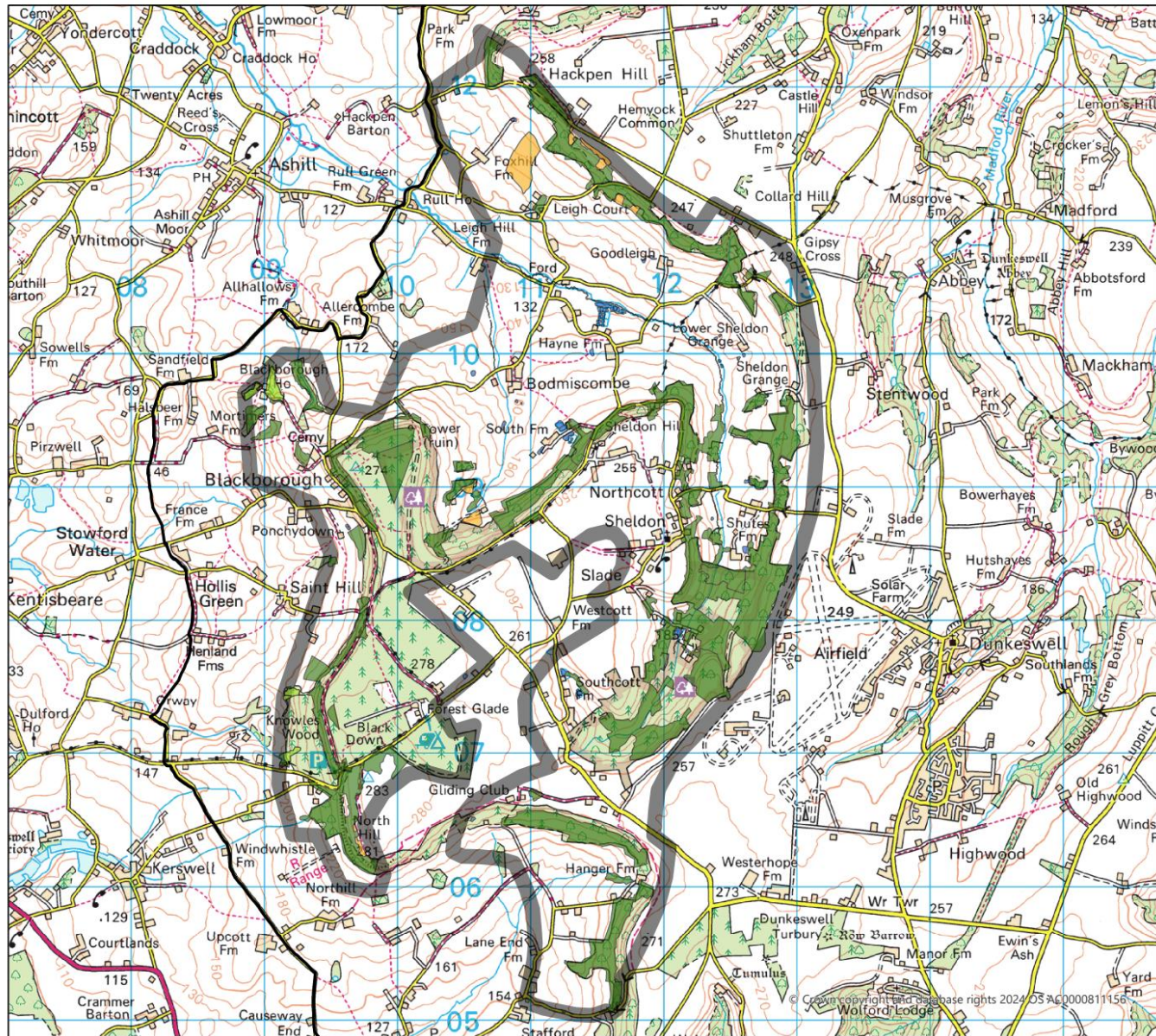
© Crown copyright and database rights 2025 OS AC0000811156

Date: 28/05/2025

Author: Amy Taverner, Farming in Protected Landscapes Trainee



C5 SHELDON AND BLACKBOROUGH



Legend

- C5: Sheldon and Blackborough
- BHNL Boundary
- Potential 30by30 Areas C5
- Protected areas
- Deciduous woodland
- Ancient woodland
- Woodland pasture and parkland
- Priority habitat
- Surface water

Center: 3°15'33"W 50°52'15"N

0 0.5 1 2 Kilometers

ArcGIS
Plot:



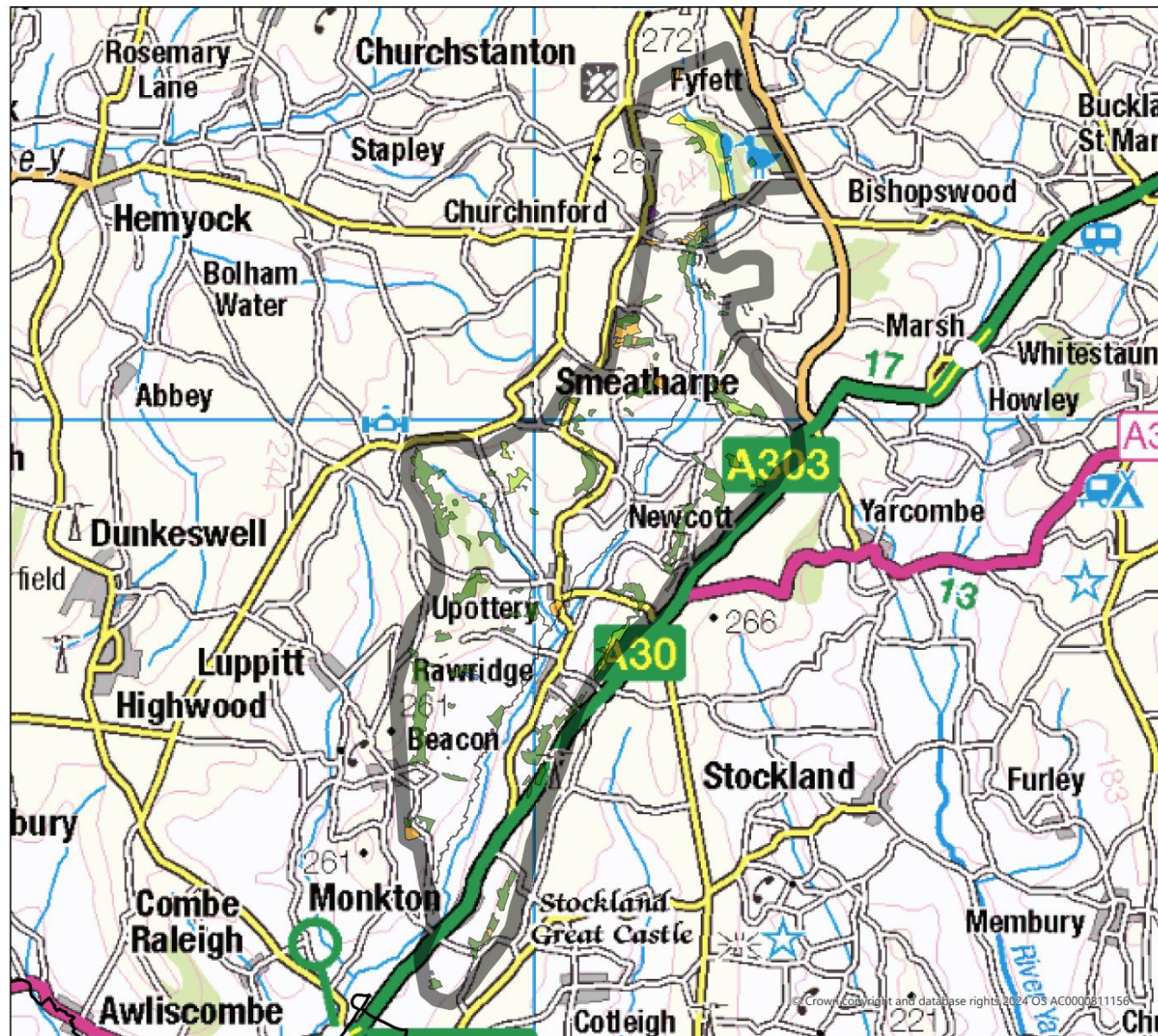
© Crown copyright and database rights 2025 OS AC0000811156

Date: 28/05/2025

Author: Amy Taverner, Farming in Protected Landscapes Trainee



O1 UPPER OTTER



- Legend**
- O1: Upper Otter
 - BHNL Boundary
 - Potential 30by30 Areas O1
 - Protected area
 - Deciduous woodland
 - Ancient woodland
 - Woodland pasture and parkland
 - Priority habitat
 - Surface water

Center: 3°7'36"W 50°52'14"N

ArcGIS
Plot:



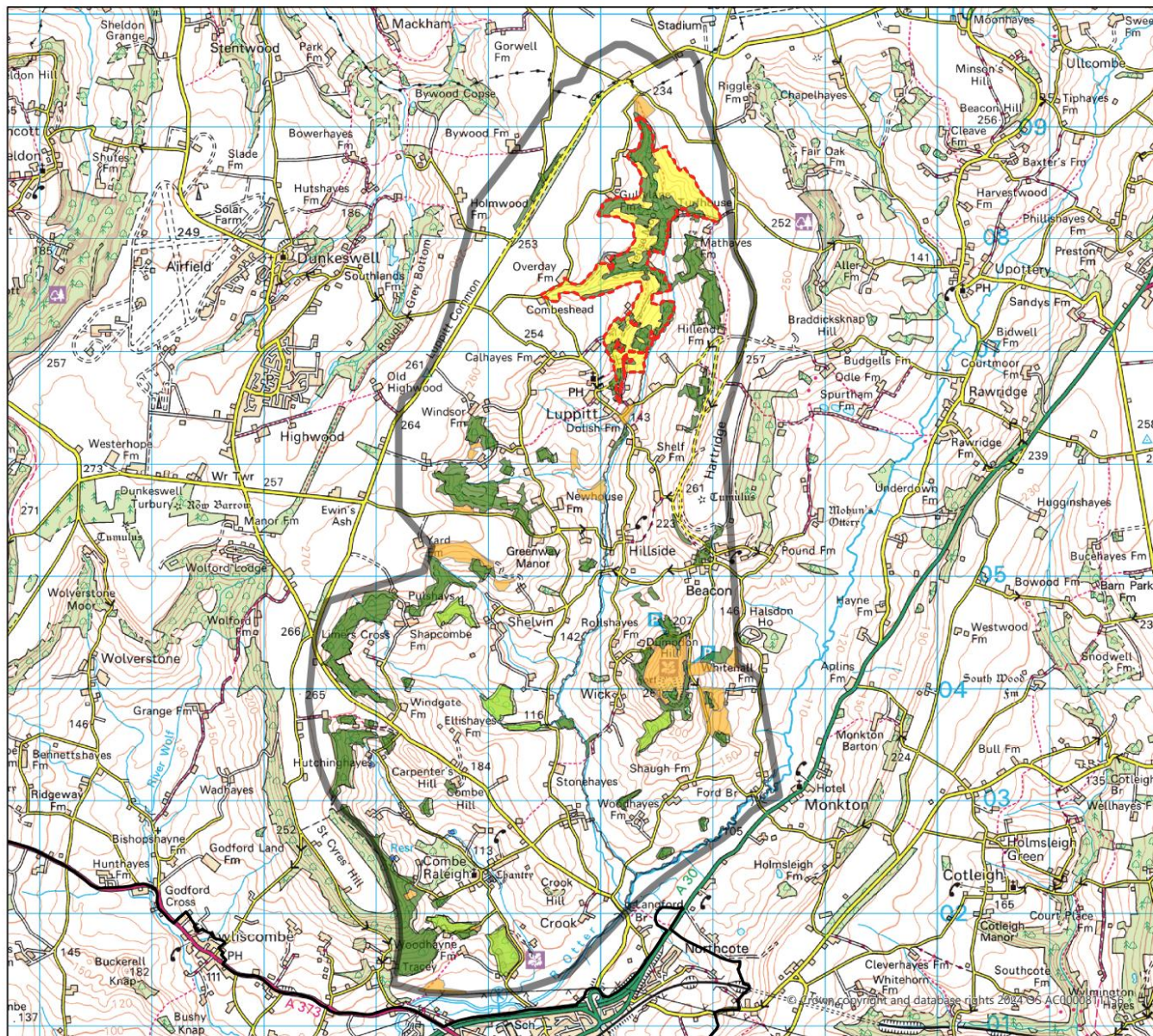
© Crown copyright and database rights 2025 OS AC0000811156

Date: 28/05/2025

Author: Amy Taverner, Farming in Protected Landscapes Trainee



O2 LUPPITT



Legend

- BHNL Boundary
- O2: Luppitt
- Potential 30by30 Areas O2
- Ancient woodland
- Deciduous woodland
- Protected areas
- Priority habitat
- Surface water
- Woodland pasture and parkland
- Excluded (SSSI's in favourable and unfavourable recovering condition - considered 'actual' 30by30)
-

Center: 3°10'53"W 50°50'32"N

0 0.5 1 2 Kilometers

ArcGIS
Plot:



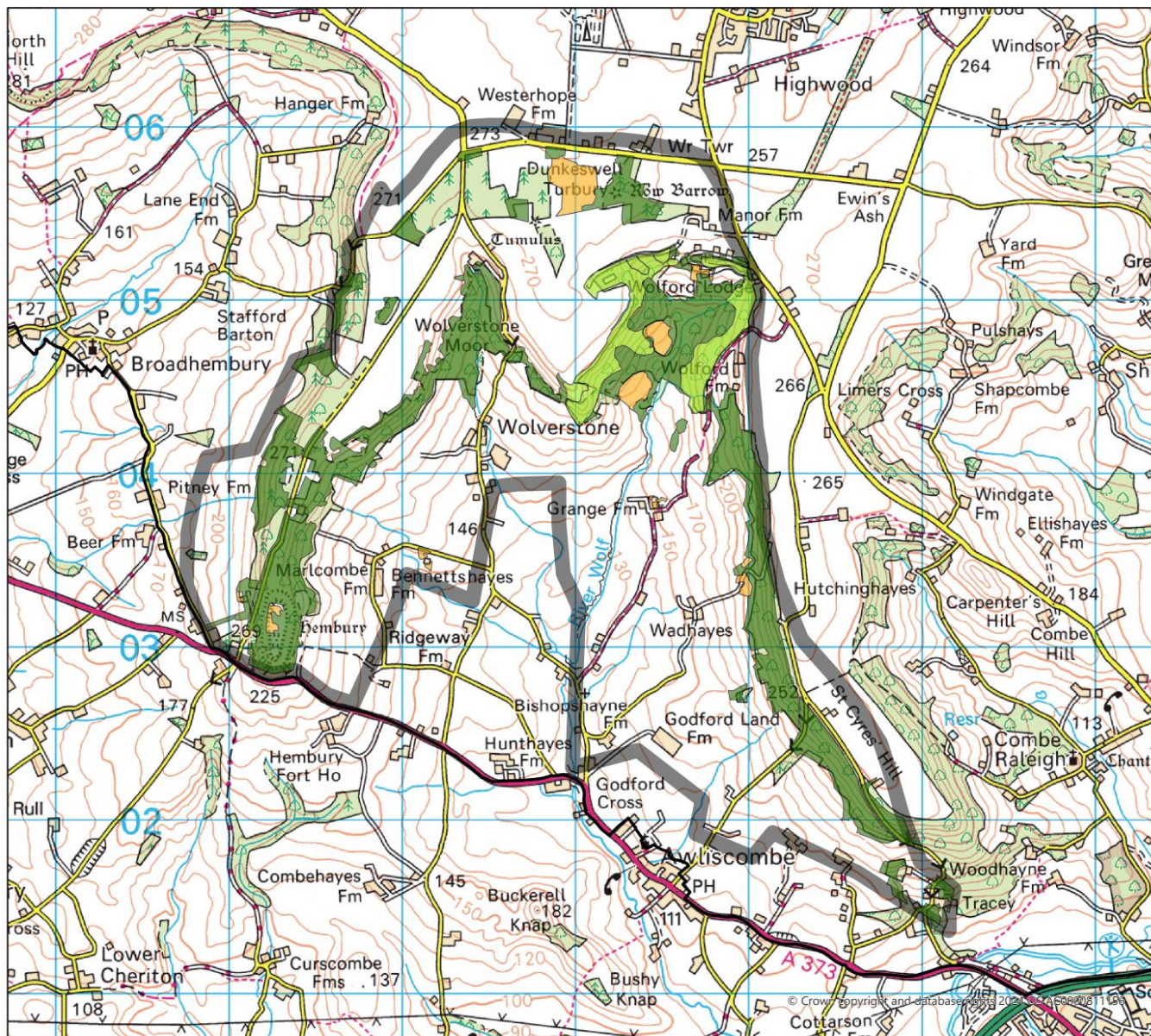
© Crown copyright and database rights 2025 OS AC0000811156

Date: 18/06/2025

Author: Amy Taverner, Farming in Protected Landscapes Trainee



O3 AWLICOMBE



Legend

- O3: Awliscombe
- BHNL Boundary
- Potential 30by30 Areas O3
- Protected areas
- Deciduous woodland
- Ancient woodland
- Woodland pasture and parkland
- Priority habitat
- Surface water

Center: 3°14'5"W 50°49'33"N

ArcGIS
Plot:



© Crown copyright and database rights 2025 OS AC0000811156

Date: 28/05/2025

Author: Amy Taverner, Farming in Protected Landscapes Trainee

